

CITIZEN

Micro HumanTech

Fast, easy and reliable High speed printing with unique ease of use



CT-S801
(available in black or white)

LCD display

The industry's first POS printer with LCD display for easy configuration and operation. Many set up options and coloured status or error messages.

In a hurry?

With 300mm/sec. print speed the CT-S801 is the fastest POS printer in the market.

Toolfree maintenance

Paper jam? No problem for the CT-S801. One hand grip and the cutter is released automatically. No tool is needed.

Even if the long-life cutter ever needs to be exchanged. Thanks to its Snap-In design this only takes 30 seconds.

Internal Power Supply

All 80mm POS printers from Citizen offer an internal power supply.

CT-S801

POS

Applications

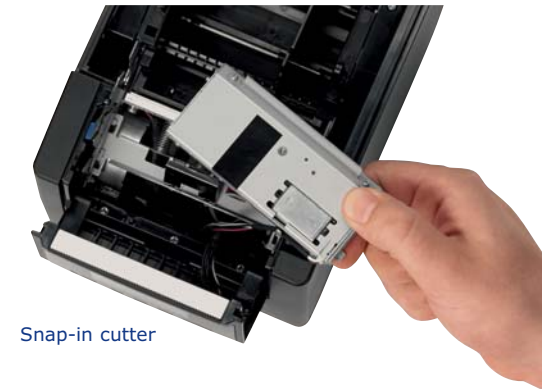
- Receipt
- Coupon
- Ticket
- Daily Report
- Kitchen
- Delivery slip
- Barcode
- Weigh scales
- Kiosk
- Queue management



Online status



Error message with instruction



Snap-in cutter

CITIZEN

Micro HumanTech

Accessories

Interface Connections

Serial IF1-RS01	USB incl. USB hub IF1-HU01
Parallel IF1-PA01	Ethernet (SEH) IF1-ES01
USB IF1-UB01	Ethernet (Standard) IF1-ET01
Powered USB IF1-PU01	

Specifications

Printing method	Line thermal dot printing
Printing width	80mm/640 dots, 72mm/576 dots, 64mm/512 dots, 54.5mm/436 dots, 54mm/432 dots, 52.5mm/420 dots, 48mm/384 dots, 45mm/360 dots, 48.75mm/390 dots, 68.25mm/546 dots
Dot pitch	8 x 8 dots/mm (203 dpi)
Printing speed	300mm/s (fastest, print density 100%), 2400 dot-lines/s
Number of columns	83mm paper: Font A - 53, Font B - 71, Font C - 80, 80mm paper: Font A - 48, Font B - 64, Font C - 72, 60mm paper: Font A - 36, Font B - 48, Font C - 54, 58mm paper: Font A - 35, Font B - 46, Font C - 52
Character size (WxH)	1.50 x 3.00mm (Font A: 12 x 24 dots), 1.13 x 2.13mm (Font B: 9 x 17 dots), 1.00 x 2.00mm (Font C: 8 x 16 dots)
Character table	Alphanumeric, international, PC437/850/852/857/858/860/863/864/865/866/WPC1252/katakana/Thai code 18
Barcode type	UPC-A/E, JAN-13/8, Code 39, Code 128, CODABAR, Code 93, PDF417, QR Code
Logo registration/print	384 KB (capable of storing user-defined characters and logos)
Line spacing	4.23mm (1/6 inch), can be set by command
Paper	Width 83mm/80mm/60mm/58mm (all +0/-1mm) Diameter maximum 83mm Thickness 65-75µm (core tube diameter: inner 12mm/outer 18mm) 75-150µm (core tube diameter: inner 25.4mm/outer 32mm) Recommended Paper TF-50KS-E-2D from Nippon Paper, PD150R or PD160R from Ohji Paper, PA220AG, HP220A, HP220AB-1, F230AA, P220AB, or PB670 (2-color paper) from Mitsubishi Paper
Interface	Serial (RS-232C compliant), parallel (IEEE 1284 compliant), USB, USB with hub, Ethernet, powered USB
Input buffer	4K bytes/45 bytes
Drawer kick-out	2 drawers
External device port	RJ-45, 8-pin connector
Liquid crystal display (LCD)	128 x 32 dots STN liquid crystal, white/red LED backlight
Power supply	Input: AC 100 to 240V, 50/60 Hz, 150 VA, Output: DC 24, 2.1 A
Weight	CT-S801S: Approx. 2 kg, CT-S801A: Approx. 1.6 kg
Dimensions (W x D x H)	CT-S801S: 145 x 192 x 148 mm, CT-S801A: 145 (W) x 192 (D) x 120 (H) mm
Operating environment	5 to 45°C, 10 to 90% RH (no condensation)
Storage environment	-20 to 60°C, 10 to 90% RH (no condensation)
Reliability	Print head life: 150km, 200 million pulses (at normal temperature and humidity using recommended paper), Auto cutter life: 2 million cuts (at normal temperature/humidity, using recommended paper and paper thickness)
EMC and safety standards	UL, C-UL, FCC Class A, TUV-Bauart, CE Marking

Type Classification

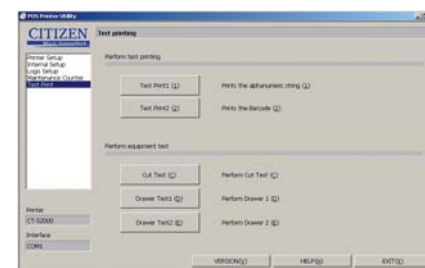
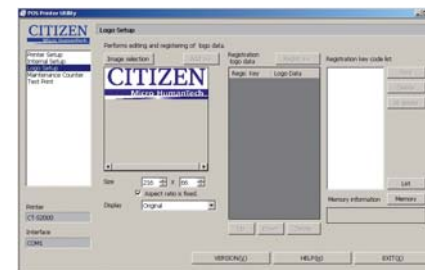
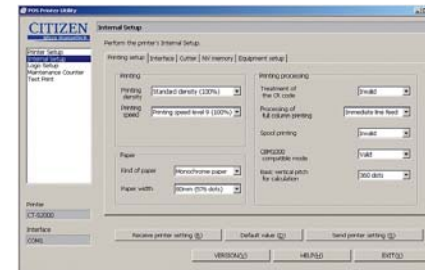
CT-S801S 3 RS E BK P L M1
1) 2) 3) 4) 5) 6) 7) 8) 9)

1) Model type CT-S801	2) Power supply DC: No power source S: Built-in power supply type A: AC adapter type	3) Paper width 3: 3 inch (80/83 mm) 2: 2 inch (58/60 mm)	4) Interface PA: Parallel RS: Serial RS-232C UB: USB only UH: USB with hub	ET: Ethernet (standard type) ES: Ethernet (multi-function type) UP: Powered USB
5) Market: * J: Japanese E: Europe/Asia U: North America C: China	6) Body case color WH: White BK: Black GR: Gray	7) PNE sensor No P: PNE sensor	8) Label No L: Label type	9) Black Mark sensor No M1: Left side M2: Right side



Exchangeable interfaces plus RJ-45 port

Customization Software



Features



- 300mm / sec high-speed printing
- 82,5/80/60/58 mm selectable paper width
- Easy paper loading
- Auto retracting Cutter (full/partial)
- Snap-in cutter
- LCD display
- Built-in buzzer
- Top paper exit
- Paper roll capacity Ø 83mm
- Exchangeable interface cards
- RJ-45 port
- Built-in AC adaptor
- Cash drawer kick-out
- Bitmap registration (NV memory)
- Barcode printing
- ESC/POS compatibility
- Page mode
- Two color printing
- Smoothing fonts
- Available in white, black or dark grey (option)
- Driver: Win2000/XP/Vista/2003 Server, OPOS, Java POS, CUPS
- Utility software: Printer Customization, POS Printer Utility