

Performance.  
Flexibility.  
Serviceability.



- **The innovative 15D1  
All-in-One touchcomputer  
for POS applications**

# The 15D1 puts the “All” into All-in-One Touchcomputers



The Elo TouchSystems 15D1 touchcomputer represents a whole new direction in All-in-One solutions for retail and hospitality environments. A versatile, highly functional and elegantly designed touchcomputer for POS applications, the 15D1 has the industry-leading quality and value customers have come to expect from all Tyco Electronics' Elo TouchSystems products. Designed for touch from the ground up, the 15D1 features a slim, vertical design with a footprint sized to match standard cash drawers, coupled with exceptional performance, enhanced field serviceability and extended connectivity options.

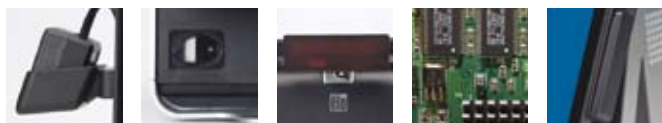
## Advanced performance

With its powerful Celeron 1.8 GHz processor, 512MB of RAM expandable to 4GB, 512K L2 cache, and 800 MHz FSB, the 15D1 handles highly demanding POS applications with ease.

## Utmost flexibility

### Flexible peripherals

The 15D1 offers a broad range of optional peripherals that can be installed with ease in the field, making it a cinch to customize.

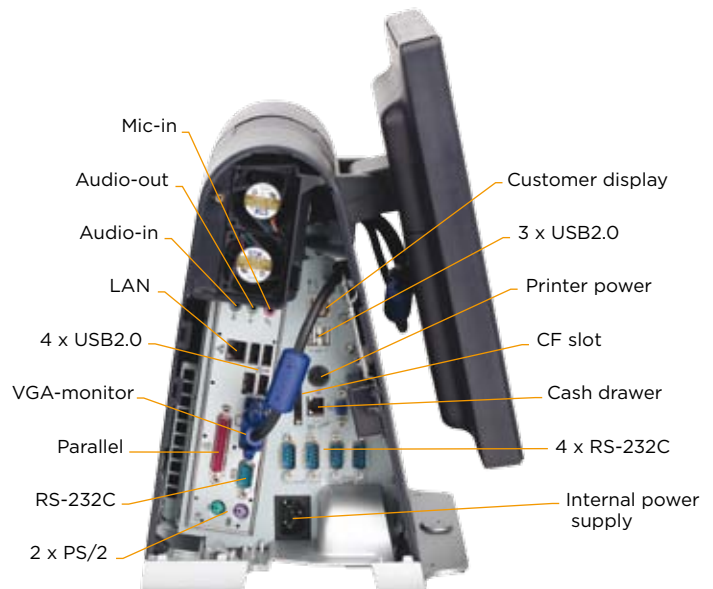


Barcode scanner    Fingerprint reader    Customer display    Wireless Card    Magnetic Stripe Reader



### Flexible connectivity

“No limits” is what we had in mind when we developed the connection options for the 15D1. As a result, our new unit comes with an impressive range of input/output port options that support any third-party peripheral, such as cash drawers, printers, etc. Better still, the connections are all nicely hidden from view, offering a sleek, modern look while avoiding incidental disconnection.



### Flexible operating systems

The 15D1 comes without operating system or with a choice of fully installed Windows Embedded for Point-of-Service, Windows XP or Windows Vista OS, enabling broad compatibility with peripheral software and drivers. It also has driver software support for Elo TouchSystems peripherals and cash drawer (OPOS).

## On-the-spot serviceability

We have designed the 15D1 for convenient, on-the-spot service: removing the front and the back cover makes it easy to replace or upgrade the processor, hard disk or motherboard quickly or change the fan or the power supply. And by minimizing service time, we maximize your time for doing business.



## An exceptional design

### Designed for convenience

- With its vertical design and small footprint, the 15D1 fits neatly on a cash drawer and still leaves space for a POS printer
- Its perpendicular-mounted MSR uses less space
- The MSR has longer “travel” for better card-reading
- The monitor can be tilted for ergonomic convenience
- Excellent cable management.

### Designed for style

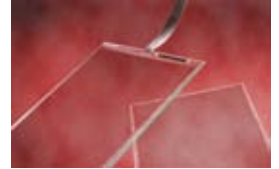
With its advanced, exclusive design, the 15D1 brings a competitive edge to your POS environment. The Zero-Bezel APR seamless glass surface looks sophisticated and delivers a brilliant touch experience. It's highly practical, too, because virtually 100 percent of the surface area is useable, which also makes maintenance easier.

The cable management system is yet another feature to the 15D1's credit: connectors are nicely hidden in the I/O bay, cables can exit left or right and no external cables are required when installing Elo TouchSystems accessories. As a result, customers have a clean, unobstructed view of the read-out and you enjoy added security from tampering and robust tie-downs for strain relief.

## Superior touch technologies

### Zero-Bezel APR (Acoustic Pulse Recognition)

APR combines the ultimate in optical qualities, durability and stability with excellent dragging properties, along with any-stylus activation. It is also resistant to water and other contaminants on the screen.



### True-Flat AccuTouch (five-wire resistive)

The workhorse of resistive touchscreens provides unsurpassed performance in POS. Touch the screen with a finger, gloved hand, fingernail or other object such as a credit card, and you'll get a fast, accurate response every time.



### IntelliTouch (surface acoustic wave)

IntelliTouch is the optical benchmark for touch. Its pure glass construction provides superior optical performance and makes it an extremely scratch-resistant technology. You try it; it's virtually impossible to physically “wear out” this touchscreen!



## Specifications

<b>Processor</b>	Intel Celeron-430 1.8GHz 512K L2 Cache 800MHz FSB LGA775 Pkg
<b>Chipset</b>	Intel G31/ICH7
<b>Operating Systems</b>	Windows XP Professional Service Pack 3, Windows Vista Business, Windows Embedded for Point-of-Service or no operating system
<b>Memory</b>	512MB 667MHz DDR2 standard on one slot, expandable up to 4GB (2 slots available)
<b>Hard Disk Drive</b>	1 x 2.5" SATA hard drive, 80GB minimum, optional 2nd 80GB hard drive available
<b>Audio</b>	Two internal speakers (2W each)
<b>I/O</b>	3 standard serial ports RS232 DB9 2 powered serial ports (5V default/12V; selectable via jumper) 7 USB2.0 ports 1 parallel port 1 Ethernet 100/10 Base-T port 1 Cash drawer port (12V/24V default; selectable via jumper) 2 x PS/2 (keyboard and mouse)
<b>Touch Technologies</b>	IntelliTouch, True-Flat AccuTouch, Zero-Bezel APR
<b>Computer Dimensions</b>	Width: 13.58" (345 mm) - Height: 11.34" (288 mm) - Depth: 8.35" (212 mm)
<b>Display Specifications</b>	Size: 15.0" diagonal (4 x 3 aspect ratio) Native Resolution: 1024 x 768 @ 60Hz Brightness (LCD Panel): 250 cd/m2 Viewing Angle: Horizontal (left/right): +/- 70° or 140° total (typical), vertical (up/down): 60°/65° or 125° total (typical) Contrast Ratio: 700:1
<b>Peripherals info</b>	MSR KIT E145919 Customer display KIT E326629 Fingerprint reader KIT E373639 Barcode scanner KIT 1D SCNNR E946856 Barcode scanner KIT OMNISCNNR E449881 Wireless card KIT WIRELESS CARD E238795 Hard Disk KIT HARD DRIVE E828965 Printer cable E337867

Find out more on [www.elotouch.eu](http://www.elotouch.eu)

**Corporate Headquarters** Tel +1 650 361 4700 Fax +1 650 361 4747 [eloinfo@elotouch.com](mailto:eloinfo@elotouch.com) [www.elotouch.com](http://www.elotouch.com)  
**European Headquarters** Tel +32 16 35 21 00 Fax +32 16 35 21 01 [elosales@elotouch.com](mailto:elosales@elotouch.com) [www.elotouch.eu](http://www.elotouch.eu)

[www.tycoelectronics.com](http://www.tycoelectronics.com)

Elo TouchSystems, Tyco Electronics, TE (Logo), AccuTouch and IntelliTouch are trademarks. Celeron, Windows XP, Windows Vista and Intel are trademarks of their respective owners.. All other products and company names referred to herein may be trademarks or registered trademarks of their respective companies or mark holders. Elo TouchSystems is a Tyco Electronics Corporation business. Copyright © 2009 Tyco Electronics Corporation, Inc. All rights reserved.

While Tyco Electronics and its affiliates referenced herein have made every reasonable effort to ensure the accuracy of the information contained in this catalog, Tyco Electronics cannot assure that this information is error free. For this reason, Tyco Electronics does not make any representation or offer any guarantee that such information is accurate, correct, reliable or current. Tyco Electronics reserves the right to make any adjustments to the information at any time. Tyco Electronics expressly disclaims any implied warranty regarding the information contained herein, including, but not limited to, the implied warranties of merchantability or fitness for a particular purpose. Tyco Electronics' only obligations are those stated in Tyco Electronics' Standard Terms and Conditions of Sale. Tyco Electronics will in no case be liable for any incidental, indirect or consequential damages arising from or in connection with, including, but not limited to, the sale, resale, use or misuse of its products. Users should rely on their own judgment to evaluate the suitability of a product for a certain purpose and test each product for its intended application. In case of any potential ambiguities or questions, please don't hesitate to contact us for clarification.

