

# SP700 Series

Advanced, High Speed Clamshell™ Receipt Printers



- High speed, 9-pin high quality printer capable of producing 13 x 20 line receipts per minute (4.7 – 8.9 lps)
- "Drop-In & Print", easy paper loading. Literally drop a roll of paper into the printer, close the lid and the paper is loaded!
- New splash resistant design with easy-clean curves for robust kitchen / bar use
- Two colour output for emphasis purposes
- Internal power supply with universal cable included at purchase

- Value-Added Software for Retailers, OEMs, System Builders and Software Developers with Marketing and Graphics Tools including the new **Graphics Management Tool** with a name and list facility for easy identification and use for up to 255 images. This tool will also facilitate multiple printer configurations by enabling the PC to upload each complete graphics list quickly and simply

The **Logo Store Driver Tool** can download multiple images (mono or colour in a variety of formats) by simply printing a document containing all the images

The **Virtual Serial Port Emulator** will allow Ethernet or USB interface use whilst still retaining legacy software

- New Star "Intuitive" Compatibility for Microsoft applications including JavaPOS™, OPOS™ with Vista WHQL certification

### Typical Applications

- Receipt Printer**  
for POS systems that require reliability and speed
- Hospitality**  
Splash resistant cover. Buzzer alarm and wall mount option

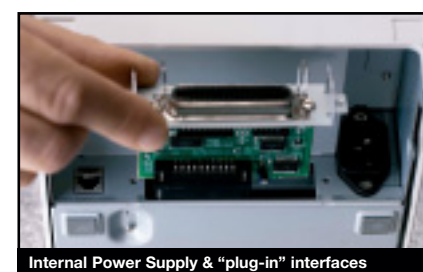
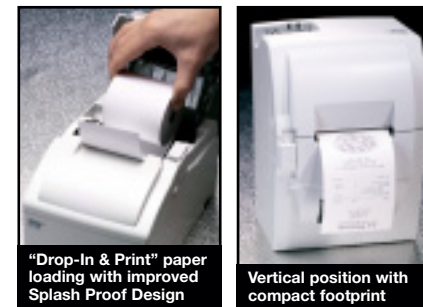
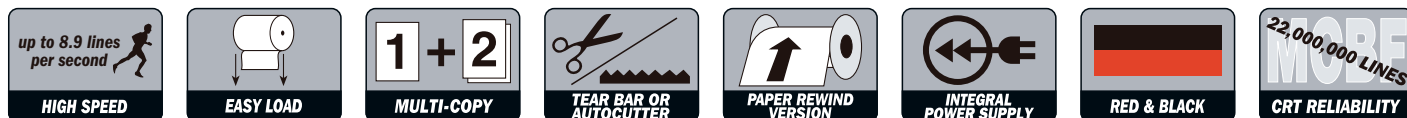
- SP712** Tear Bar Printer
- SP712R** Tear Bar Rewind Version
- SP742** Autocutter Printer
- SP742R** Autocutter Rewind Version

All available in Star White or Charcoal Grey with Serial / Parallel / USB (WHQL certified) or no Interface

### High Speed Performance

Printer	Driver	Receipts Per Minute
<b>Star SP742</b>	<b>SP712 / 742 V1.0</b>	<b>13</b>
<b>Epson™-U220™</b>	<b>Advanced Driver 3.0.2E</b>	<b>9</b>

Results obtained printing 80mm wide x 150mm long receipt with Microsoft Windows XP™ on Pentium PC with CPU 1996MHz with 512MB RAM



### SP700 Printer Specifications

Print Method	9 Pin Serial Impact Dot Matrix
Printer Versions:	Tear Bar Mono and Red / Black Model
SP712	Autocutter Mono and Red / Black Model (full or partial cut)
SP742	Tear Bar and Autocutter Rewind Models
Interface Versions	RS232 / Parallel / USB 2.0 / Without Interface
Interface Options	Ethernet / WiFi
Print Speed	Capable of printing 13 x 20 line receipts per minute from 4.7 to 8.9 lps depending on number of columns
Paper Feed Speed	Approx. 5.6 inches per second (@ continuous feed)
Print Direction	Bi-directional, Logic Seeking
Print font:	
Character Matrix	7 x 9 (Half dot) / 5 x 9
Column capacity	42 / 35
Character Size (mm)	1.2 (W) x 2.42 (H) / 1.5 (W) x 2.42 (H)
Character Set	95 Alphanumeric, 32 International
Code Pages	40
Character Per Inch (CPI)	16.9 / 14.1
Paper Loading	Drop-In and Print, Easy Load with see-through cover
Paper Handling:	
Width with guide included	76mm (default), 69.5mm, 58mm (± 0.5) x 85mm roll diameter
Thickness	1 ply 0.06 ~ 0.085mm
Copy Capability	2 ply Original + 1, 0.05 ~ 0.08 / piece, total less 0.14
Copy Capability	3 ply Original + 2, 0.05 ~ 0.08 / piece, total less 0.20
Wall Mount Facility	Available on all models (up to 2 part paper)
Paper Sensors	Paper End (Near End Sensor option – factory fit)
Ribbon Life:	
RC700B	3 million characters
RC700BR	Black 1.5 million characters / Red 0.75 million characters
RC700D	Laundry Ribbon
Data Buffer	8 Kbyte
Program ROM	Flash Memory (16Mbit), NV bit image 256 Kbyte
Emulation	Star Mode and ESC/POS™
Power Supply	INTERNAL Power Supply with power cable included
D.K.D. Function	2 Drivers
Reliability	MCBF 22 million lines
Autocutter (Guillotine)	1.5 million cuts
Overall Dimensions	160 (W) x 245 (D) x 152 (H) mm 164 (W) x 245 (D) x 152 (H) mm (rewind versions)
Weight	SP712: 2.96Kg, SP742: 3.18Kg, SP712R: 3.43Kg, SP742R: 3.65Kg
EMI Standard	VCCI Class A, FCC Class A, CE
Safety Standard	UL, C-UL, TÜV, CB, EN60950
Options	Buzzer, Wall mount / vertical use kit

